



Cross the Land – Americas - 2025  
Pilot Briefing

# Cross the Land 2025

## Calgary CYYC Pilot Briefing

### Contents

---

CONTENTS.....	1
GENERAL INFORMATION.....	2
PILOT RESOURCES/SCENERIES.....	2
CHARTS.....	2
SCENERIES .....	2
<i>FS2020 (FSIMSTUDIOS CYYC VIA ORBX)</i> .....	2
<i>(SIMADDONS CYYC)</i> .....	2
<i>XP11/12 (X-PLANE GATEWAY)</i> .....	2
<i>P3DV3+ (FSIMSTUDIOS VIA JUST FLIGHT)</i> .....	3
EVENT ARRIVALS CYYC .....	3
ROUTES INTO CALGARY .....	3
SPEED RESTRICTION.....	3
TERMINAL AIRSPACE – CYYC_APP – CALLSIGN <i>CALGARY ARRIVALS</i> .....	3
LANDING – CYYC_TWR – CALLSIGN <i>CALGARY TOWER</i> .....	4
TAXI – CYYC_GND – CALLSIGN <i>CALGARY GROUND</i> .....	4
<i>GATE/PARKING SELECTION</i> .....	4
<i>CARGO INFO</i> .....	4
NON-EVENT ARRIVALS.....	4
FINAL NOTES .....	5
APPENDICES.....	6
CYYC TERMINAL PARKING POSITIONS .....	6
CYYC AERODROME CHART.....	7
CYYC - IGVEP7 - RUNWAY 35L AND 35R.....	8
CYYC - IGVEP7 - RUNWAYS 17R AND 17L .....	9
CYYC - EBGAL7 - RUNWAYS 17R AND 17L .....	10
CYYC - EBGAL7 - RUNWAYS 35R AND 35L .....	11

## General Information

---

Welcome to Calgary International Airport. Thank you for flying with us for your Cross the Land experience. This document will give you essential information about flying into CYYC. Please read the briefing and become familiar with the information. Enjoy your event!

## Pilot Resources/Sceneries

---

### Charts

All pilots are required to have charts onboard. Free charts are available on [fltplan.com](http://fltplan.com). After creating a free account, you can access charts covering the United States and Canada.

### Sceneries

All pilots are requested to have updated CYYC scenery. Most scenery will reflect Calgary's parallel runways. Calgary has converted Runway 08/26 to Taxiway L. This may not be referenced in your scenery. Please do the controllers and yourself a favour and pick up one of the payware or freeware options below before your flight.

*FS2020 (Fsimstudios CYYC via Orbx)*

<https://orbxdirect.com/product/fsimstudios-cyyc-msfs>

*(Simaddons CYYC)*

[https://www.simaddons.com/pages/simaddons\\_purchase\\_msfs.htm](https://www.simaddons.com/pages/simaddons_purchase_msfs.htm)

*XP11/12 (X-plane Gateway)*

<https://gateway.x-plane.com/airports/CYYC/show>

P3Dv3+ (Fsimstudios via just flight)

<https://www.justflight.com/product/calgary-international-airport-cyyc>

## Event Arrivals CYYC

---

### **Routes into Calgary**

With your clearance at your departing airport, you will be assigned a STAR. Traffic from the south will be assigned either the IGVEP7 Arrival or the EBGAL6 Arrival. Please note that depending on traffic volumes, Edmonton Centre may amend your STAR once you are handed off from Salt Lake Centre. You must be familiar with programming your FMC/MCDU as you are in the last 100nm of your flight once you leave Salt Lake airspace.

### **Speed Restriction**

Edmonton Centre may assign traffic a transition speed to ensure proper sequencing into Calgary Terminal Airspace. Please be familiar with programming your aircraft.

### **Terminal Airspace – CYYC\_APP – Callsign *Calgary Arrivals***

Calgary runs parallel runways (see Appendices). Runway 17R/35L and 17L/35R. All aircraft will be assigned the ILS approach for your assigned runway. If we are running north flow (35L/35R), you may be given a shortcut by Edmonton Centre or Calgary Arrivals to either GABOL (35L) or TASBU (35R). If we are running south flow (17L/17R) then expect to fly the entire STAR.

## **Landing – CYYC\_TWR – Callsign *Calgary Tower***

Once established on the localizer, the Arrival controller will have you contact the Tower controller. Traffic will be sequenced at 3-5 miles for landing, so please exit the runway promptly. The tower controller will advise you of the direction to exit.

## **Taxi – CYYC\_GND – Callsign *Calgary Ground***

### *Gate/Parking Selection*

The Ground Controller will assign a concourse and gate for this event. We will attempt to direct cargo to the cargo aprons, but because CYYC has no carrier-specific gates, all flights will be treated as international flights and assigned gates accordingly.

### *Cargo Info*

CYYC has two cargo aprons:

- Apron 9 on the west end of the field near runway 11 is home to Cargojet and DHL.
- Apron 7, directly west of runway 35L, is home to FedEx and UPS.

## **Non-Event Arrivals**

---

If you plan on arriving or departing Calgary during the event, you might be delayed or put in a hold or have a departure delay. Carrying extra fuel is encouraged.

In Canada, there is no “descend via” like in the US. You will be expected to fly the RNAV STAR filed in your flight plan to an altitude assigned by the controller, complying with published altitudes and airspeeds as you do so.

You can expect the ILS approach to the runway specified in the ATIS.

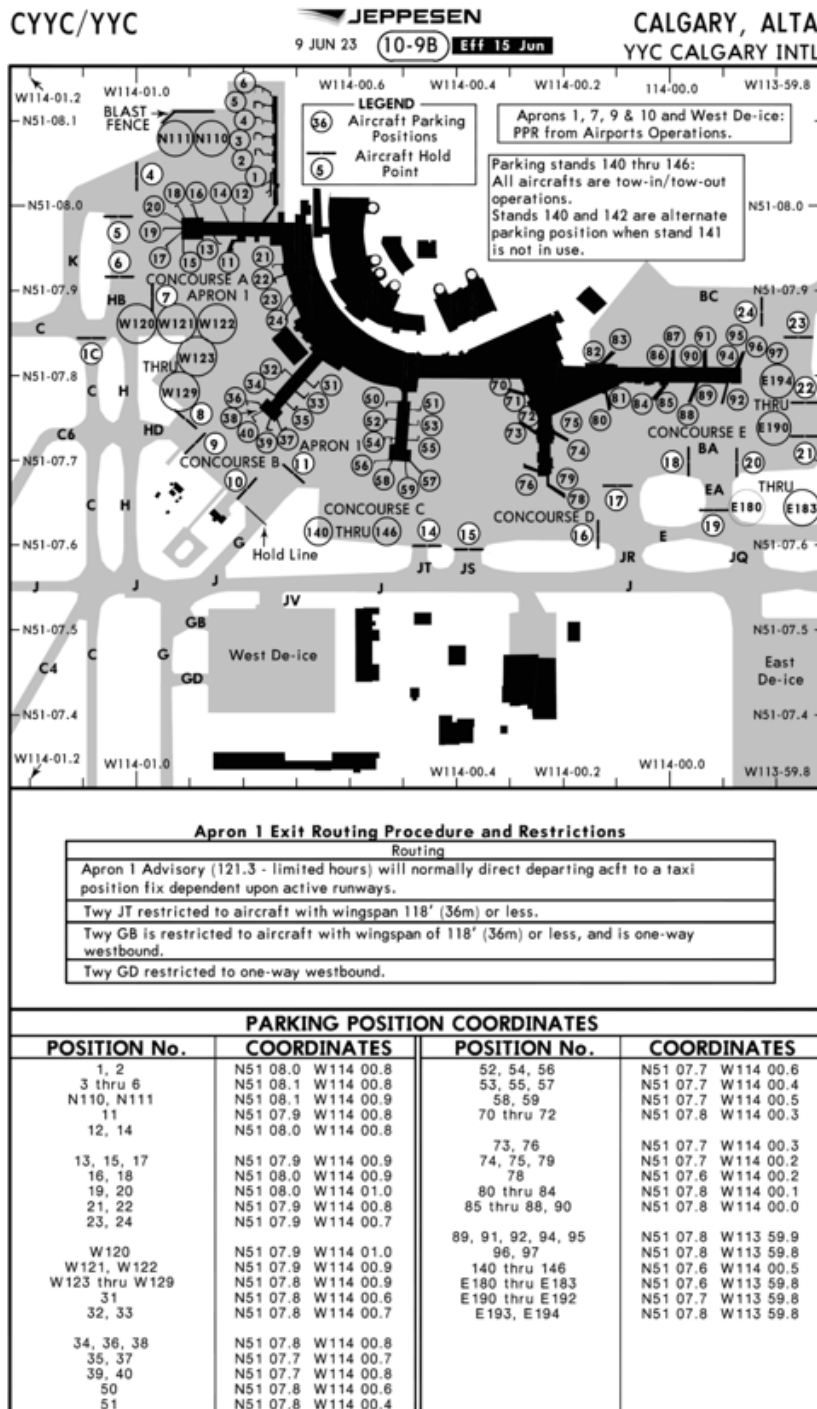
## Final Notes

---

The Edmonton FIR would like to thank you for flying into Calgary CYYC! We hope you enjoy your flight. We hope everyone has a great Cross the Land experience with us. If you have questions, please ask! We are always happy to help!

# Appendices

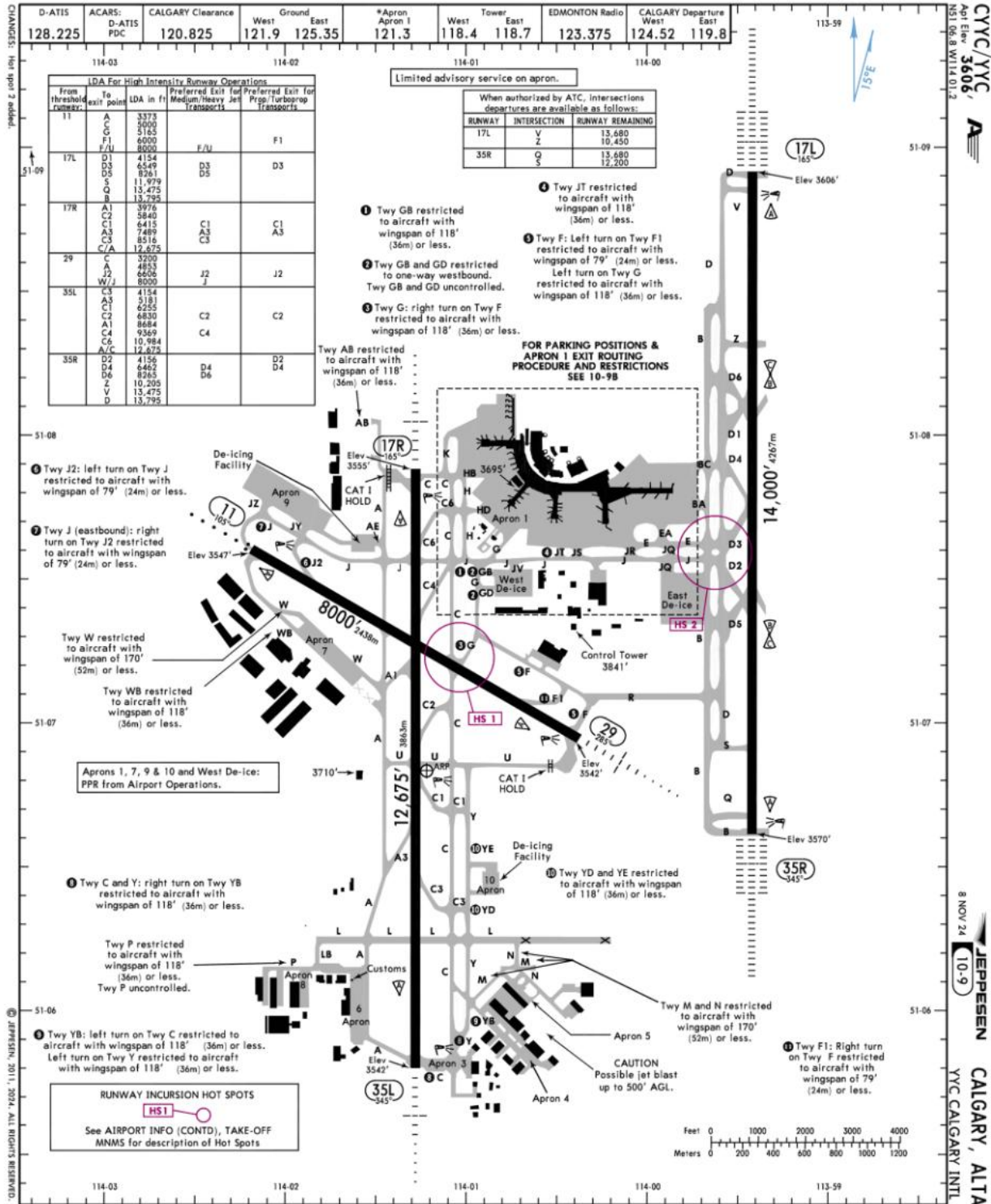
## CYYC Terminal Parking Positions



CHANGES: New aircraft parking positions at Apron 1 Concourse C. © JEPPESEN, 2001, 2023. ALL RIGHTS RESERVED.

NAVIGRAPH CHARTS INTENDED FOR FLIGHT SIMULATION ONLY - NOT FOR NAVIGATIONAL USE

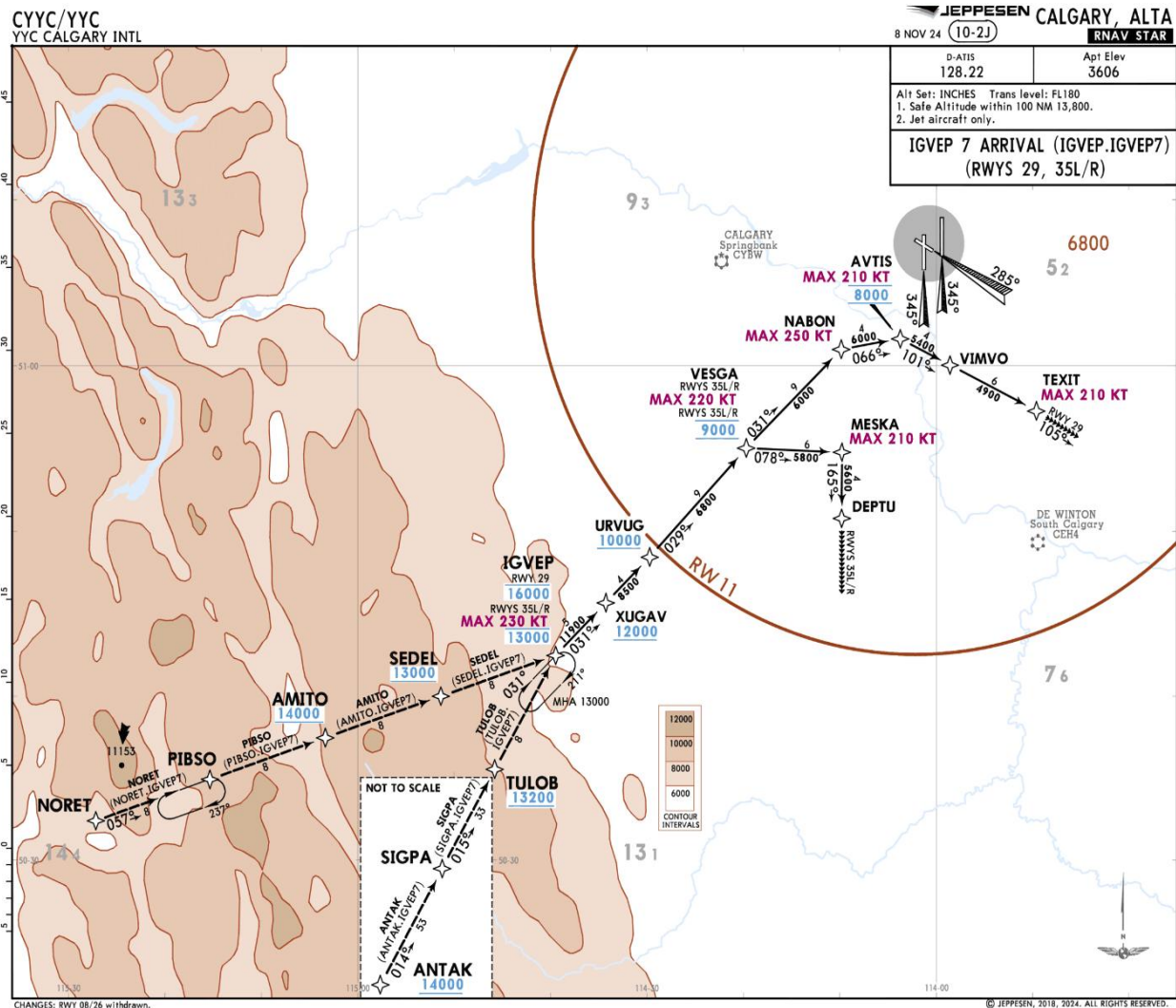
# CYYC Aerodrome Chart



NAVIGRAPH CHARTS INTENDED FOR FLIGHT SIMULATION ONLY - NOT FOR NAVIGATIONAL USE

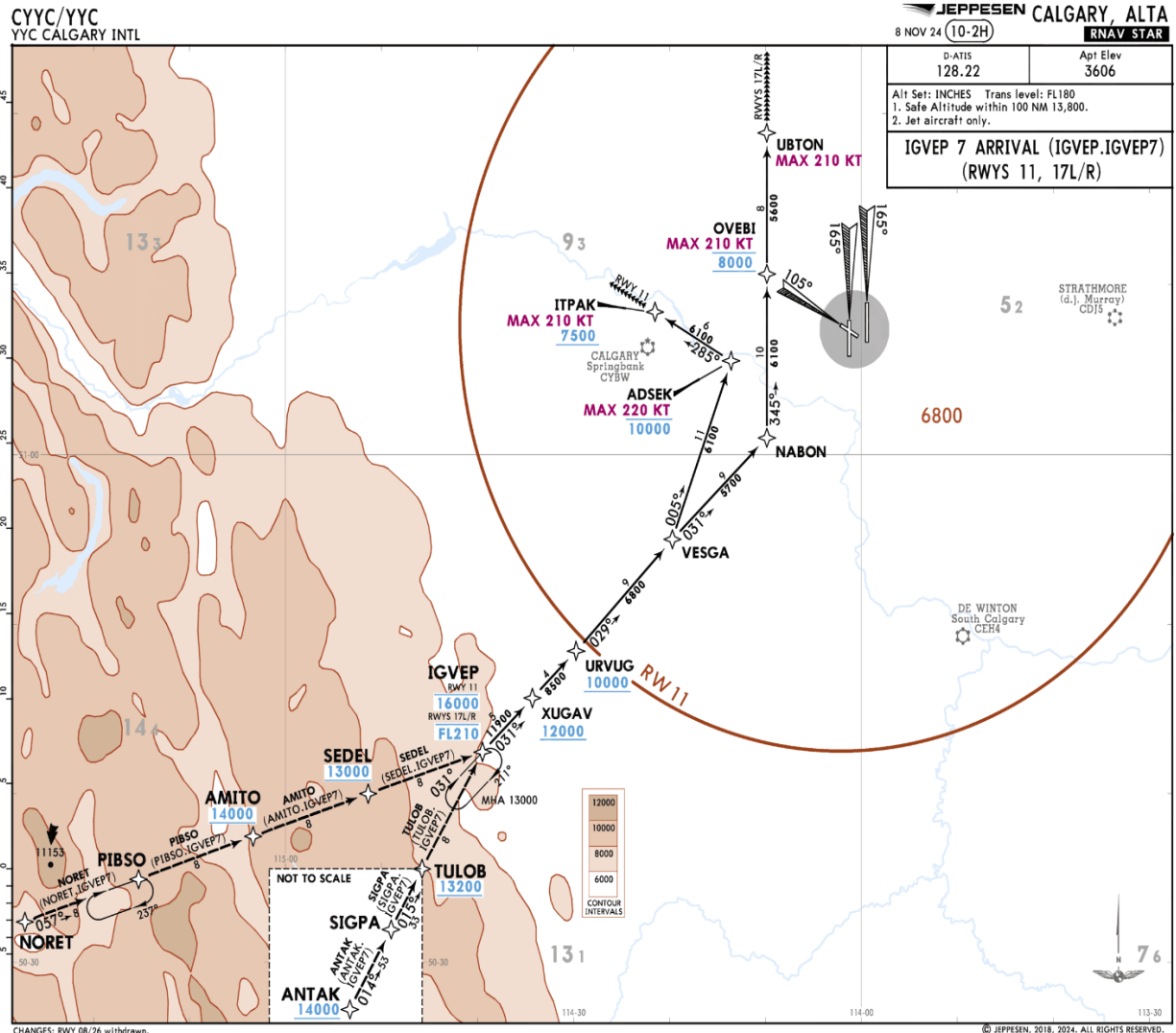


# CYYC - IGVEP7 - Runway 35L and 35R



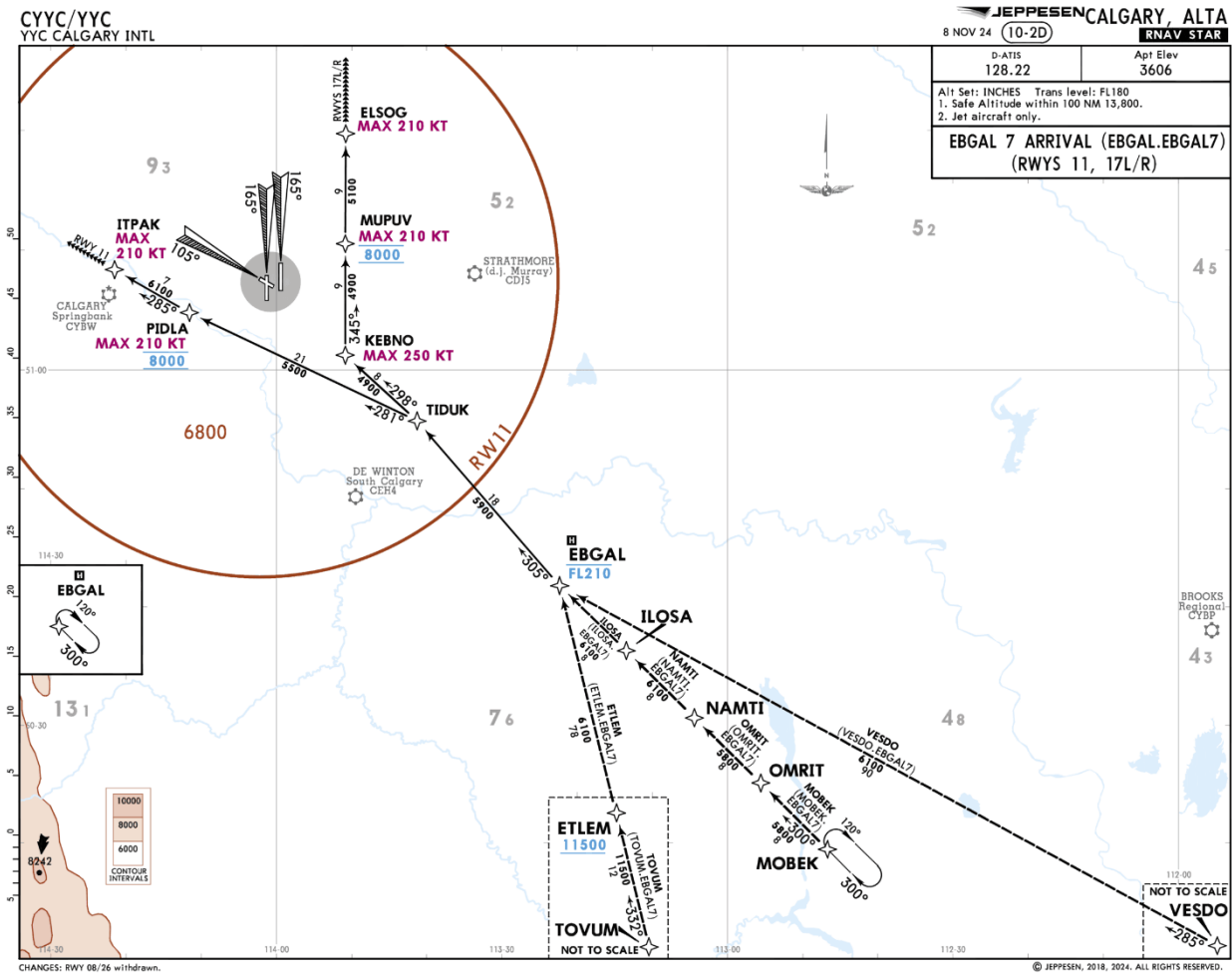
NAVIGRAPH CHARTS INTENDED FOR FLIGHT SIMULATION ONLY - NOT FOR NAVIGATIONAL USE

# CYYC – IGVEP7 – Runways 17R and 17L



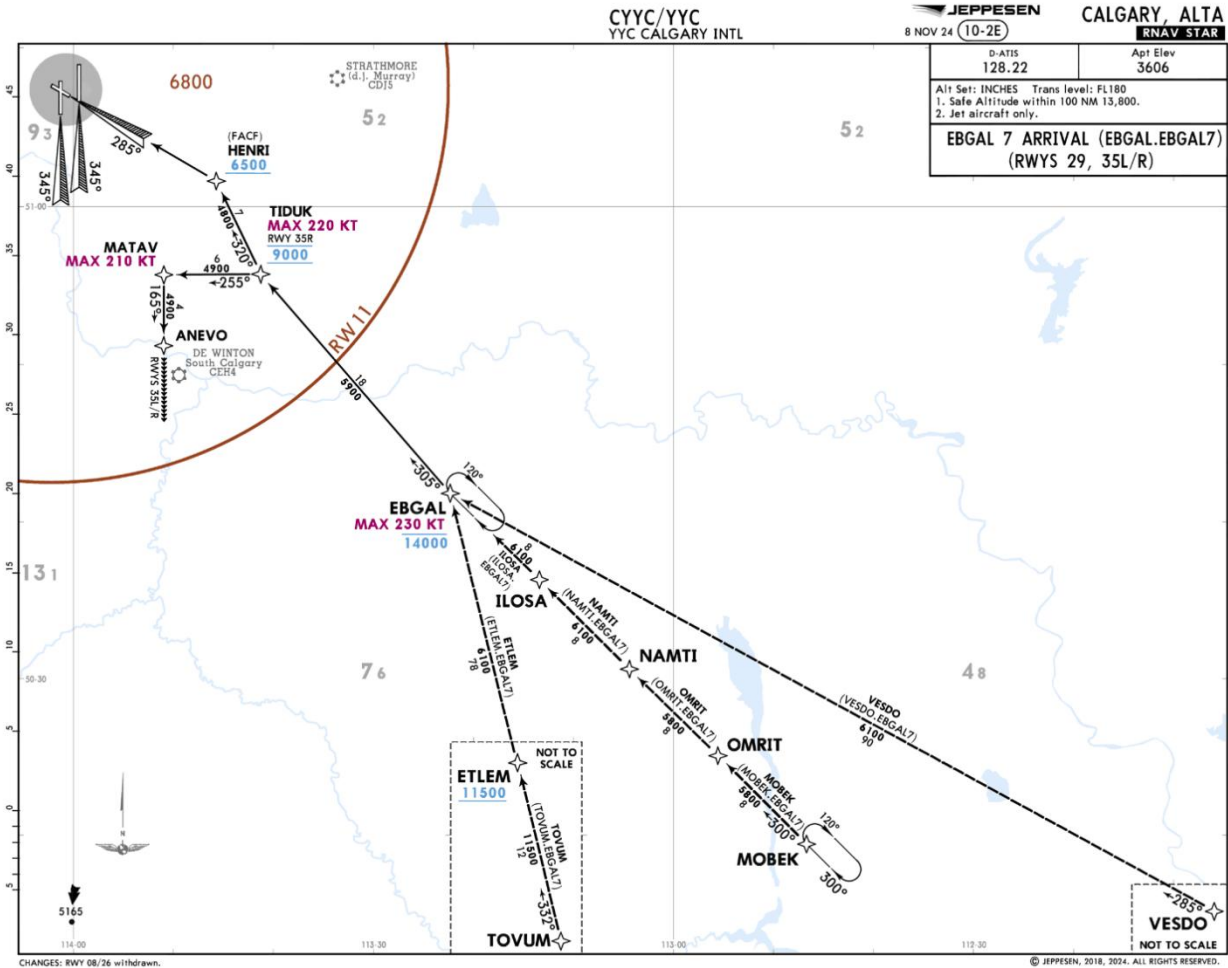
NAVIGRAPH CHARTS INTENDED FOR FLIGHT SIMULATION ONLY - NOT FOR NAVIGATIONAL USE

# CYYC – EB GAL7 – Runways 17R and 17L



NAVIGRAPH CHARTS INTENDED FOR FLIGHT SIMULATION ONLY - NOT FOR NAVIGATIONAL USE

# CYYC – EBGal7 – Runways 35R and 35L



NAVIGRAPH CHARTS INTENDED FOR FLIGHT SIMULATION ONLY - NOT FOR NAVIGATIONAL USE